

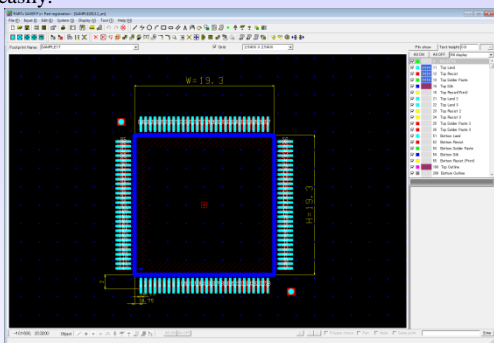
PWB Component-shape Symbol integrate tool Parts Saver F'z+

Employment which improves and does not depend for the management efficiency of the Footprint Style in a printed circuit board design on a CAD system is enabled.

"Parts Saver F'z+" is a Management tool which offers the powerful function for Registration/Search /share/analysis of a Footprint Style Information, and it unites with all Footprint Management environment.

Footprint Registration function

It is an Add function of a Footprint.
The Basic Info and Style Information on Parts are registered.
Since a search service is altogether interlocked with as well as the merit of handling of a Figure, even if it keeps in mind neither the Name of a Pad stack, nor the Name of Parts, it can call according to various Requirement for Searches.
That is, once it registers, an appropriation design can be performed easily.



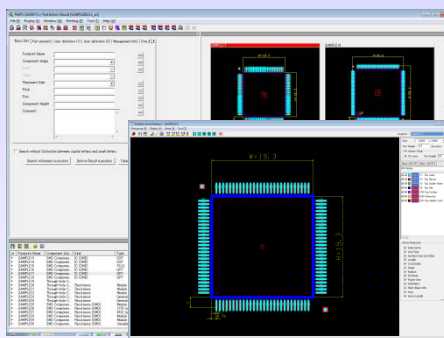
▲ Footprint Registration screen

Footprint Search / Document creation function

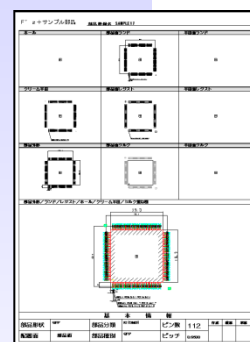
Operation is simple and it can use it easily even in the direction which is not used to PWB design CAD.

Moreover, the Item which a visitor can set up freely can register a 50-kind ON, a Requirement for Search, an indication Information, the Information for secondary elaborations, etc., and a CSV output and a DXF output are possible.

furthermore, User custom-made -- it is possible to also print and distribute a possible document creation function in an ON and an instant.



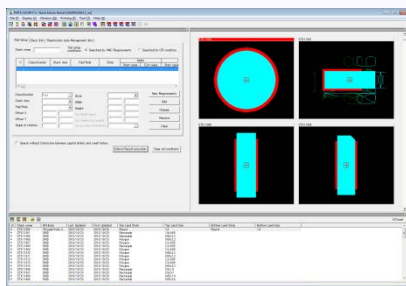
▲ Footprint Search / Detailed-viewer screen



▲ Document output sample

Stack Inform Result

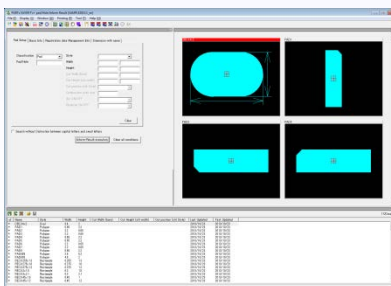
There is a Stack-Inform-Result function.
The Search which specified the Requirement for Search of the Stack-constitution element is possible.



▲ Stack search

Pad Inform Result

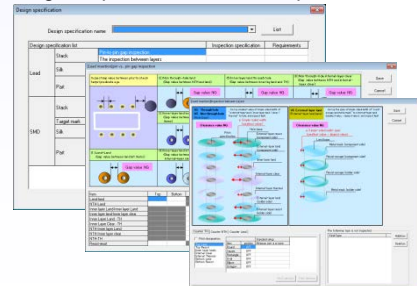
There is a Pad (Hole) search service.
The Search which specified Requirement for Searches, such as a Style and a Size, is possible.



▲ Pad search

DRC function

It is possible to carry out the Automatic Check of the Parts Data registered based on the Design specification.
The time of a Parts Save or a package Inspection execution is possible for DRC.



▲ DRC specification Setup screen

CAD interface

- CR5000BD*
- CR-5000PWS*
- Allegro*
- ICAD/PCB*
- CADIX-OHM-III*
- CADVANCE-V/alphaII, III
- Expedition
- Altium Designer
- DK-sigma
- SCICARDS
- PLANET
- MM-2
- VISULA

* CAD also has a Footprint input interface.

Hardware requirement

OS	Windows Vista / Windows 7 / Windows 8
CPU	More than clock 1GHz (recommendation)
Memory	More than 1GB (recommendation)
RDB	Oracle 11g

May 2014-1

Inquiry about these contents

Sohwa & Sophia Technologies Inc.

Tel:+81-44-981-5283

6-2 Minamikurokawa, Asao-ku, Kawasaki, Kanagawa, Japan

E-mail: sts-info@ss-technologies.co.jp

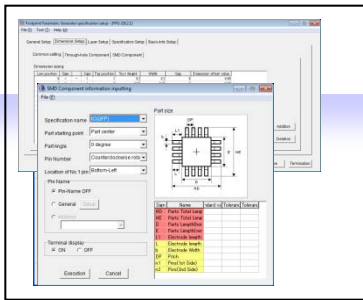
* Company name and a product name are the trademarks and registered trademarks of each company.

*Contents of this catalog may be changed without a preliminary announcement.

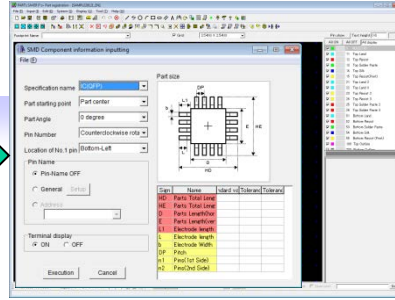
Parts Saver F'z+ Option

FPG(Footprint Parametric Generator)

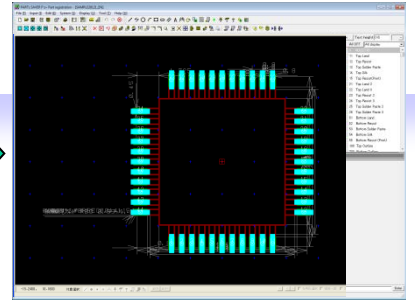
It is a function which carries out Automatic generation of the Pad stack of Parts, an outside, and Dimension from the Size of a parts catalog.



▲ specification Setup



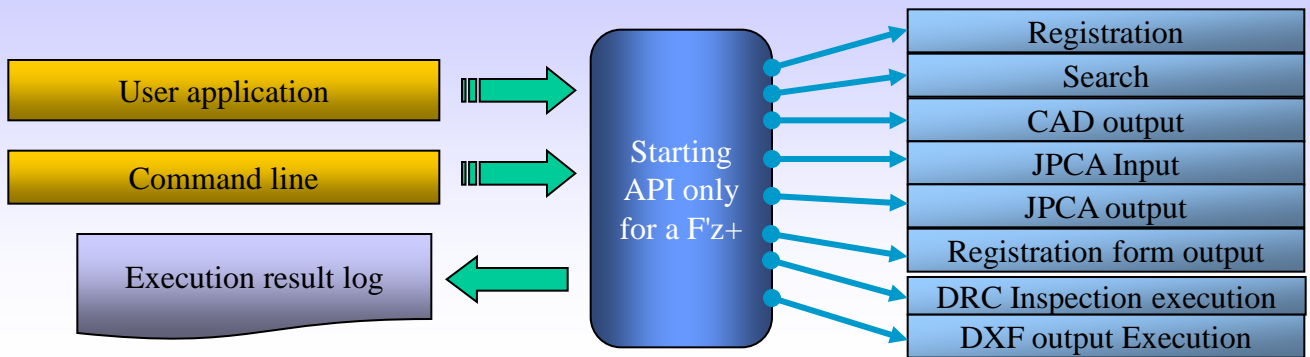
▲ FPG Registration



▲ Footprint Registration screen

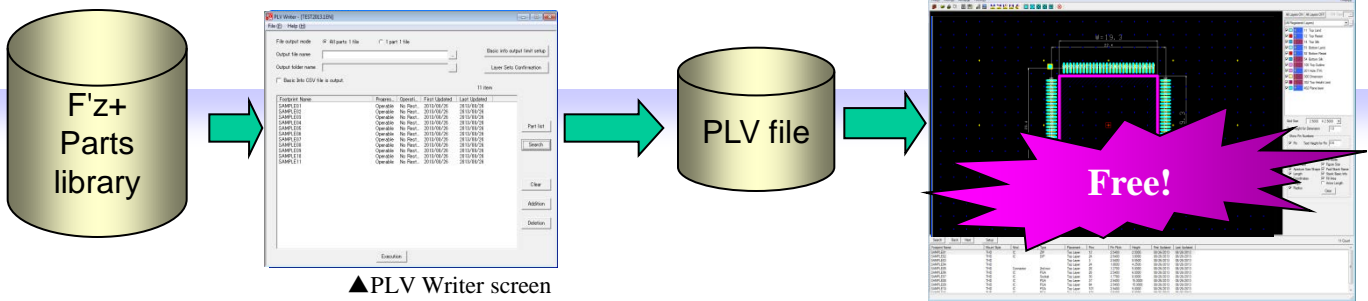
Starting API

It is a function it becomes possible to start each function of a F'z+ in batch from User application or a command line.



PLV(Parts Light Viewer)

Without using a F'z+, a Display Check of a Component shape is possible. It is a function which outputs the PLV file which can refer to free PLVViewer.

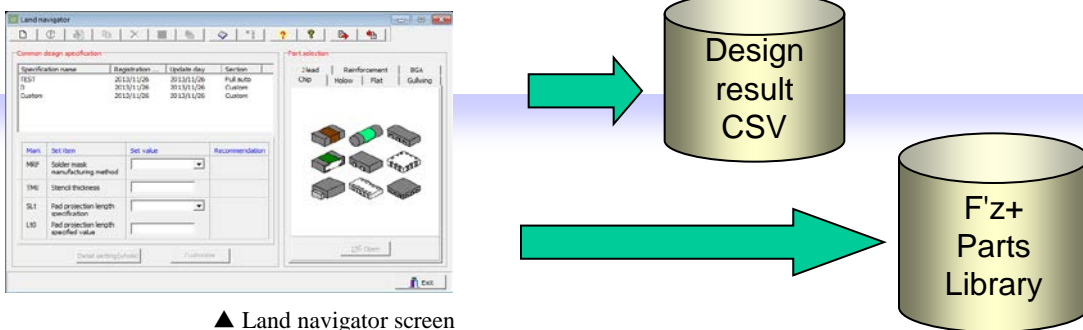


▲ PLV Writer screen

▲ PLV screen

Land navigator

It is a system which computes the optimal fillet volume from the Lead-Dim and land width of Parts, and determines the Size and position of a Land / Resist / mask.



▲ Land navigator screen