

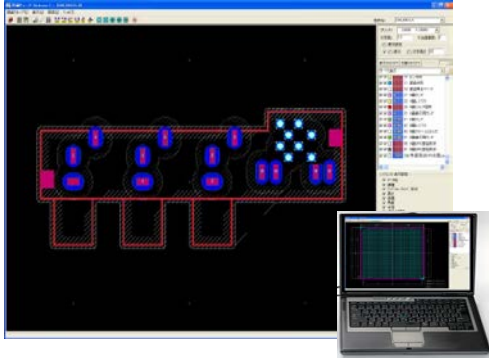
Throughout
The World

Parts Saver F'z+

Footprint Style
Management
Software

COMPUTEX2014
Third Hall
Booth No.G0355

Provides Footprint management environment that does not require
PCB Design CAD



- ◆ Footprint generation efficiency
: reduces work hours by **40%**
- ◆ Stable data quality
: improves defect ratio by **50%**
- ◆ Capital investment costs down
: reduces cost by **50%**

▪ Realizes footprint unified management through more than **10 types**
of CAD interface between different models

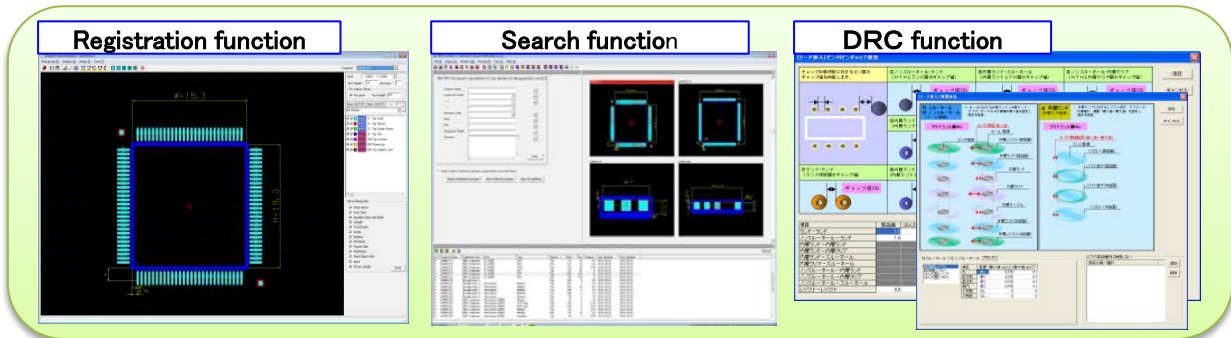
Allegro (Cadence)、Altium Designer (Altium)、CADVANCE α III (YDC)
CR-5000BD (Zuken)、CR-8000DF (Zuken)、CR-5000PWS (Zuken)
Expedition PCB (Mentor Graphics), etc.

▪ Customer support

Major upgrade **Twice a year**

Supporting over **500 licenses at 100 companies** including NEC, Panasonic and SONY

Supports world
top 3 PCB
design CADs !



Product introduction: <http://www.ss-technologies.co.jp/computex.html>

※Product and company names are trademarks or registered trademarks of their respective owners.

※The numerical values shown here are according to our own calculation.

Specifications, configurations and functions are subject to change without notice.



CONTACT

Contact:

Sohwa & Sophia Technologies Inc.

ADDR : 6-2 Minamikurokawa, Asao-ku, Kawasaki, Kanagawa, Japan

URL : <http://www.ss-technologies.co.jp/en/index.html>

E-Mail : market@ss-technologies.co.jp

(Please contact us by email in English or Chinese)

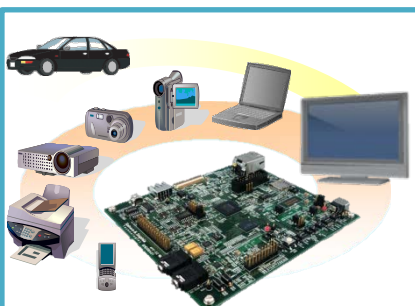
Affiliate company:

Sohwa Malaysia Sdn. Bhd.

ADDR : Unit 5-2, Level 5, Tower 6, Avenue 5, The Horizon, Bangsar
South No.8, Jalan Kerinchi 59200, Kuala Lumpur, Malaysia

URL : <http://www.sohwa-m.com.my/index.html>

**Sohwa & Sophia
Technologies**



Engineering Solution Provider

- Sales of Debug tool for R&D engineers
- Contract Development & Manufacturing