

# Sohwa & Sophia Technologies

## Corporate Profile



### Engineering Solution Provider

- Sales of Debug tool for R&D engineers
- Contract Development & Manufacturing

**N a m e** Sohwa&SophiaTechnologies Inc.

**Established** April 1, 1983

**Locations** Headquarters : Kanagawa  
Tohoku Branch : Fukushima  
Kyushu Branch : Fukuoka  
Nagoya Branch : Aichi

**C a p i t a l** JPY 497,500,000 (KURODA、DENSO)

**CEO & COO** Seiji Konishi

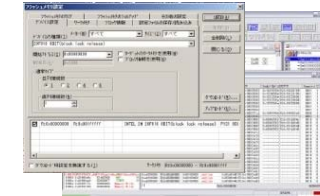
**Employees** 127 as of April 1, 2024

**Contact** TEL: 044-981-5280 (Gen)  
e-mail: [webmaster@ss-technologies.co.jp](mailto:webmaster@ss-technologies.co.jp)  
URL: <http://www.ss-technologies.co.jp>

## Business

### Products for R&D Engineers

- Microprocessor development tools
- Personal Analyzers



### Hardware & Software engineering and manufacturing services

- Embedded / Evaluation Board Development and Mfg.
- Electronic Circuit Design, Board Design & Mfg.
- SI/PI/EMI/Electromagnetic Field Simulation
- FPGA Design
- OS Porting, Firmware Development
- Driver, Middleware, Application Development
- Product Evaluation / Debugging
- OEM/ODM

■ Headquarters



■ Tohoku Branch



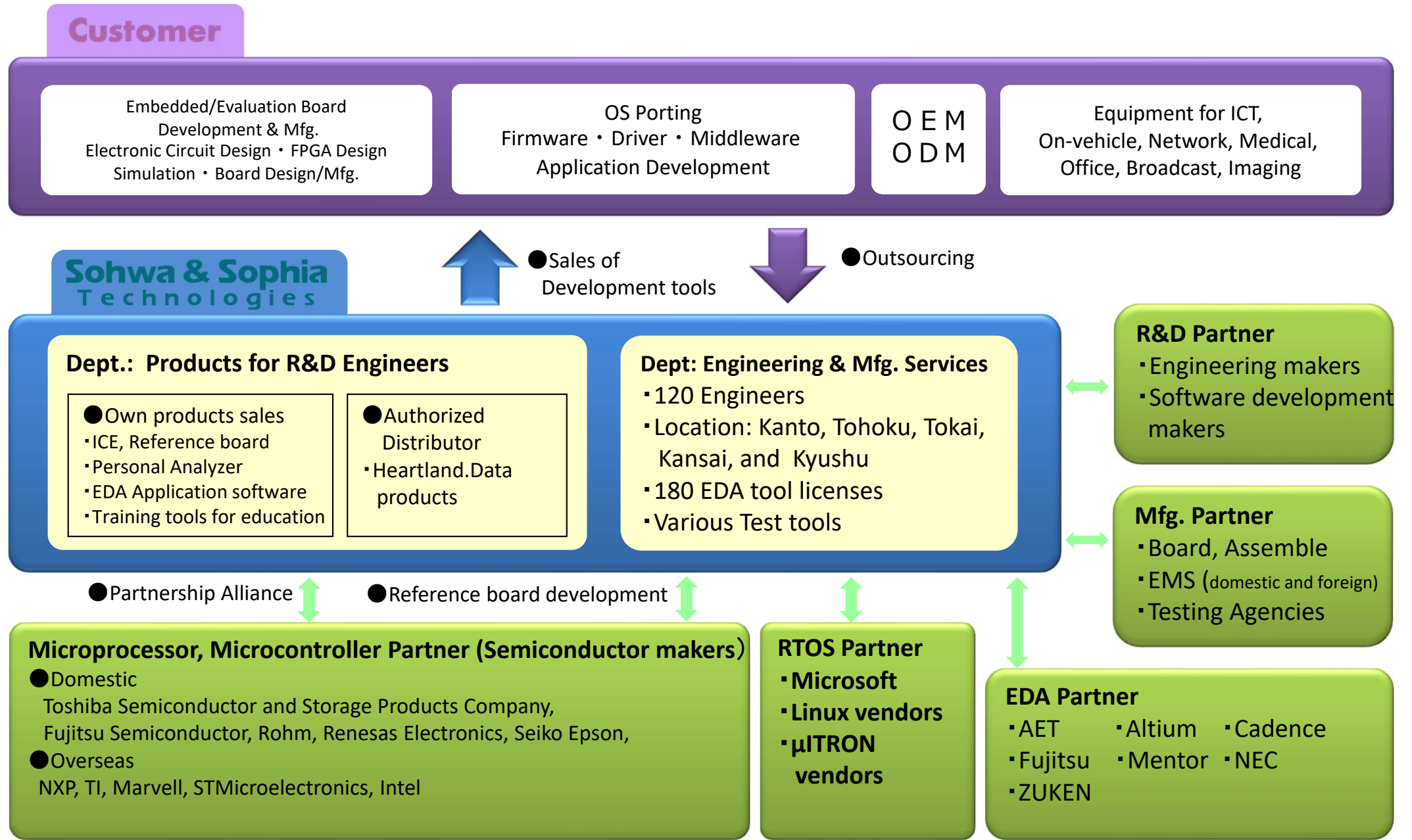
■ Kyushu Branch



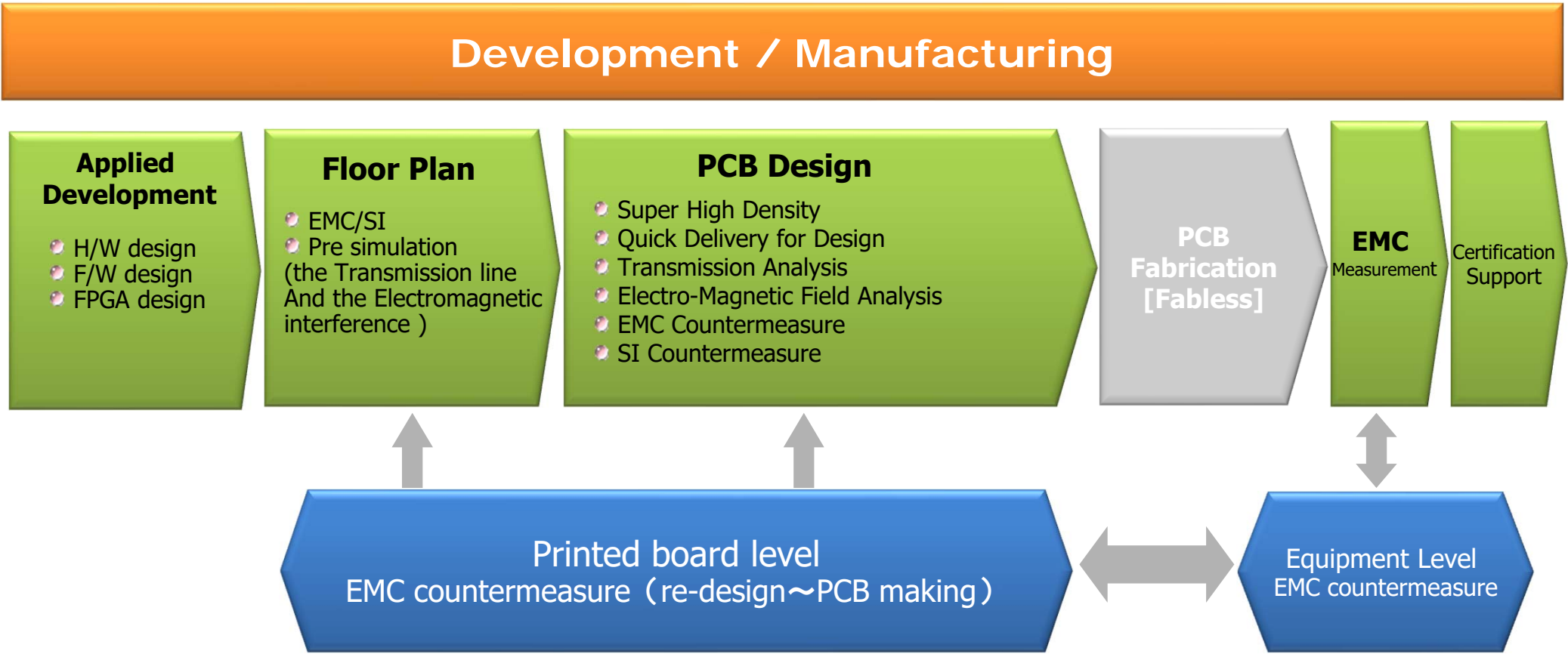
■ Nagoya Branch



We will meet our customer's needs as a partner of hardware & software engineering and manufacturing services, including electronic circuit design, and as a provider of test & measurement equipment, including debugging tools.

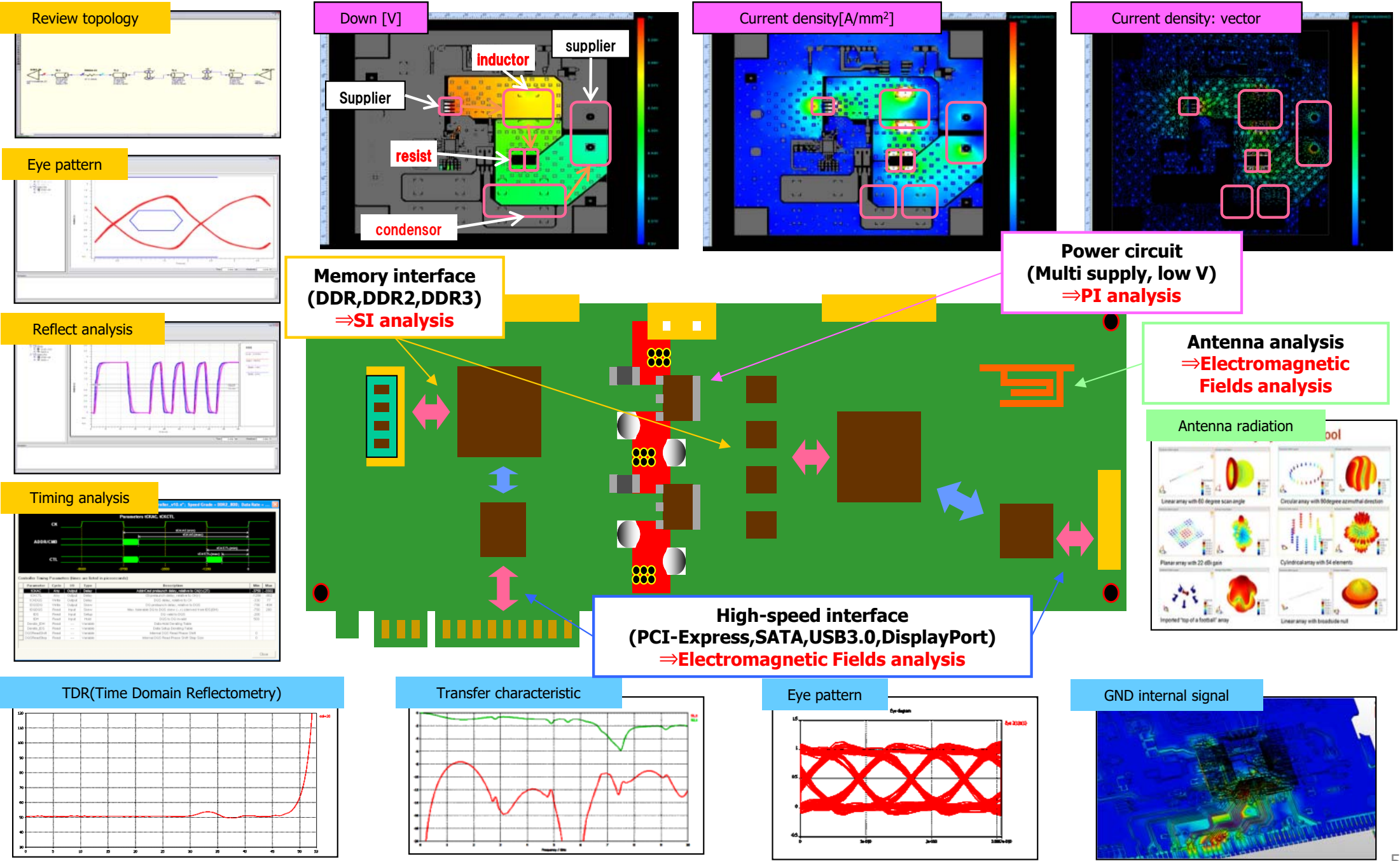


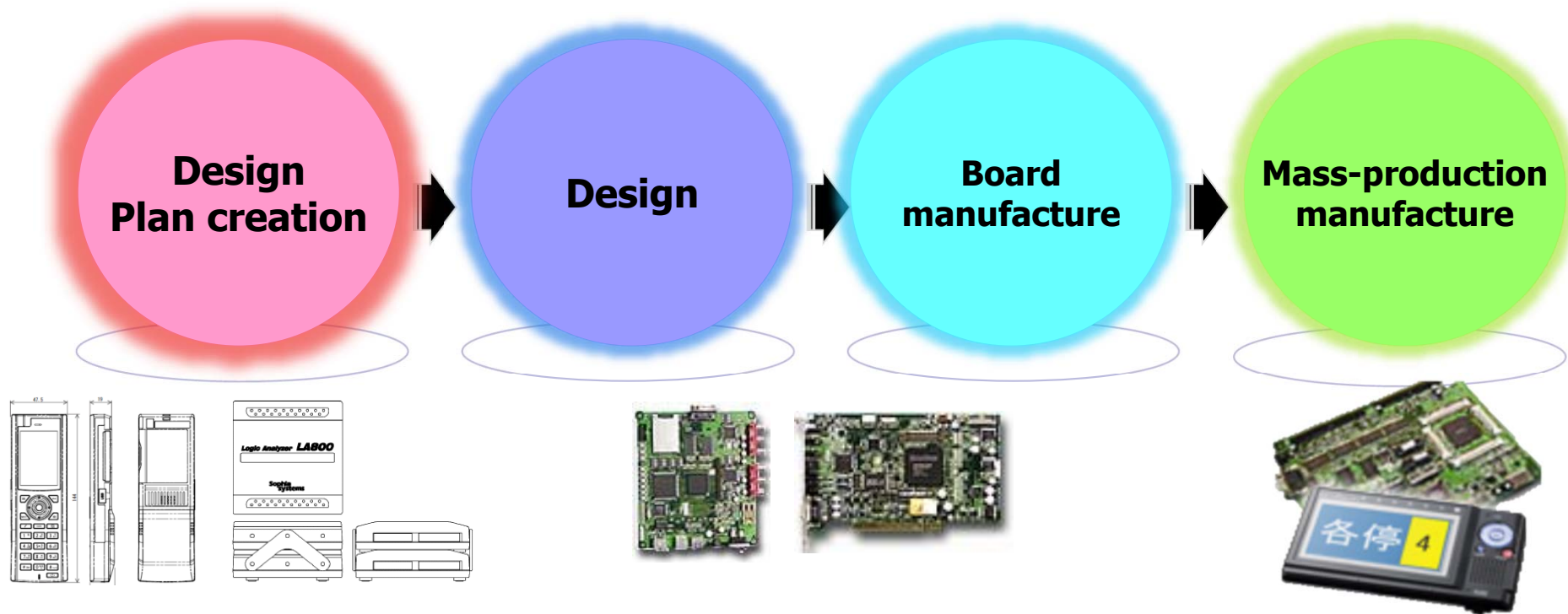
**Sohwa&SophiaTechnologies offers Embedded development design total solutions with using the best technologies of development from the commission-development to high-performance design and manufacturing.**





Sohwa&SophiaTechnologies can provide [High quality Printed board within short term] via our simulation technology.





**When customers need help with their development or manufacturing, we can cover all this. Of course we can custom our platform design for customer request.**

**We can help with customer requests (problems) in regards to reduction of the cost, shortening scheduled delivery dates, and supporting complicated system debugging.**

## Product Development, OEM/ODM Experiences

### ◆ Industrial/Consumer Equipment

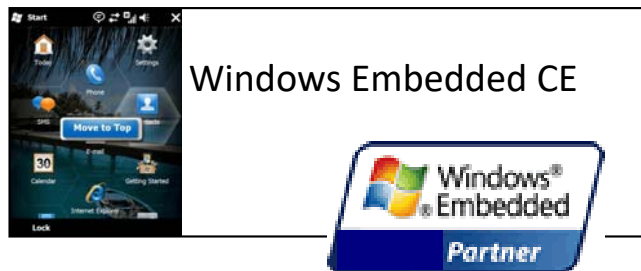
- On-vehicle: Engine ECU simulator
- Imaging: Digital signage
- Communication: Cable broadcasting equipment
- Security: In/Out security control board
- Music al instrument: Imaging effector
- Measurement equipment : Data logger
- Railway: GPS Navigation terminal
- Home electronics: E-book terminal board
- Instrument: Terminal board for visually handicapped
- Measurement equipment : Digital thermometer
- Semiconductor: Custom made ICE



## Software Development

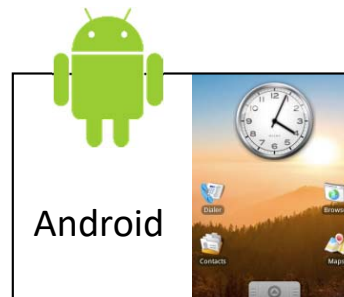
### ◆ OS Porting

- Windows Embedded CE
- Android
- Linux
- $\mu$ ITRON
- TOPPERS



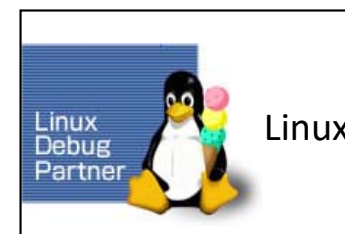
### ◆ Driver Development

- LCD
- Touch Panel
- USB
- SD/SDIO
- Audio
- NAND
- UART
- SPI
- I2C
- LAN
- WiFi
- Zigbee
- CAN
- Camera
- NFC
- GPS
- Battery etc



### ◆ Application Development

- Debugger application -Windows
- T&M equipment application  
(Logic analyzer, Oscilloscope) -Windows
- Viewer relating application -Windows
- Network Voice Recorder -Linux
- Internet Radio -Linux
- Store's PA systems -Linux
- Digital Thermometer
- Ultrasonic waves Soldering equipment





## ● Applied Development

### ◆ Pictures

- MPEG2 encoder development
- Developing of Digital picture editing systems
- Frame synchronizer circuit design

### ◆ Intelligence Communications

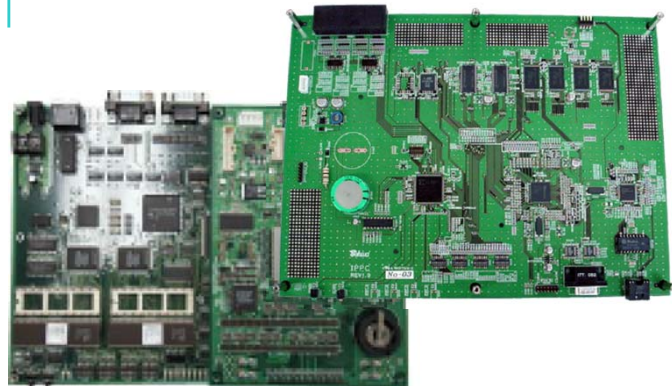
- Development of FTTH inside terminal
- Design of light module
- Development of Network equipment remote security system
- Design of super high speed WEB server

### ◆ Reference Boards

- Development of evaluation board for various ASIC and Processors

### ◆ FPGA Development

- for PHS Base Station • Telephone



## ● Printed circuit design

### ◆ Broadcast Station

- System Equipment • Camera
- Display • Video Editor
- Digital VTR • Audio Control System

### ◆ Office Equipment

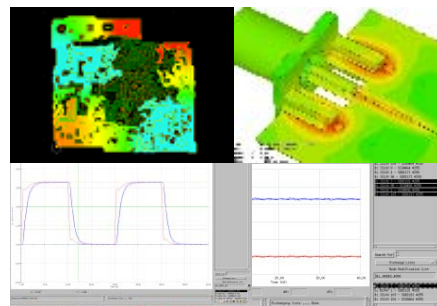
- Copier • Facsimile • LBP • Printer
- Telephone • Multipurpose Office Machine

### ◆ Instrument

- Optical Communication • Mobile
- Data Recorder • Radiation Thermometer
- Laser Scale • Digital Communication

### ◆ Automobile

- Engine Control Unit
- ITS equipment



### ◆ Computer

- Personal Computer • Workstation
- Peripherals • Router • Server

### ◆ I.T. Equipment

- Mobile Phone • PHS • PDA
- Base Station • CPU Board
- Digital TV • STB

### ◆ Others

- Digital Camera • FA Equipment
- Security Camera • Security Video Monitor
- Entertainment Robot • Industrial Robot
- Chip Set Verification Board For Camera
- Optical Module • X-Rays CT
- Ultrasonic Diagnosis Equipment

