

Universal Probe

Installation Manual

Copyright © 2014 Sohwa & Sophia Technologies Inc.

No. E090968-02

Table of Contents

1. Installation of Universal Probe software.....	3
1.1. Operation environment.....	3
1.2. The outline of install procedure.....	4
1.3. Install Universal Probe software.....	5
2. Install USB driver	13
3. Uninstall Universal Probe.....	14
3.1. Uninstall by re-install.....	14
3.2. Uninstall by add or delete application.....	16
Revision History	20
Manufacturer Information	21

1. Installation of Universal Probe software

1.1. Operation environment

Universal Probe software works with the Windows 8 / Windows 7 OS, supporting USB.

The following system is required to run this software.

- PC running Microsoft Windows 7 or later
- CPU: 1GHz or faster (depending on the requirements of the used OS)
- Memory: 1GB or larger (depending on the requirements of the used OS)
- HDD: 500MB or more free space
- OS: Windows 7 or later (32bit or 64bit versions are supported.)
- One or more empty USB 2.0 ports



The application may be unstable even if your environment meets the operation environment. It depends on connections, your PC settings or your installed software.

1.2. The outline of install procedure

The following setup is necessary for using Universal Probe software.

(1) Install Operation of Universal Probe software.

(2) Setup USB HID driver

At the first time Universal Probe and USB cable connect PC, it means start installing USB HID driver automatically.

The installer will install the Universal Probe software and the Microsoft .NET Framework 4.5 .



- If you have installed the Microsoft .NET Framework 4.5 already, it does not perform the installation of the .NET Framework 4.5.
- When application does not need ".NET Framework 4.5 ", installer will not install that.



It must execute install under Administrator.

1.3. Install Universal Probe software



It must execute install under Administrator.



This manual is explain as an example the installer of "Universal Probe Pattern Generator".

You can get the installer from our website the below.

Please download Universal Probe software installer file according to the website.

URL : http://www.ss-technologies.co.jp/en/products/u_prb/index.html

- 1) Double-click installer file which you downloaded.
The dialog for language selection will be open.
Please select a language, then click **Next**. **If you select "Japanese", the following messages will be shown in Japanese.** Then, the dialog for setup as following will open.

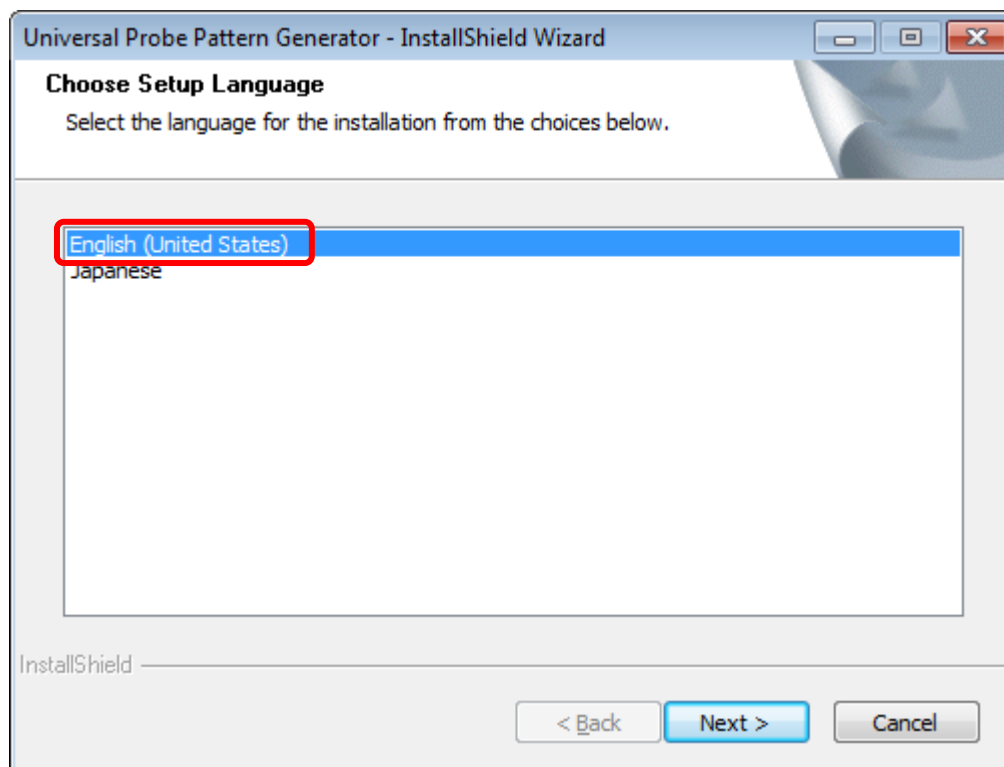


Figure 1

- 2) If the "Microsoft .NET Framework 4.5" is not installed, the following dialog box will open, please click the installation.



(2) to (3) will not be displayed if the "Microsoft .NET Framework 4.5" is already installed.

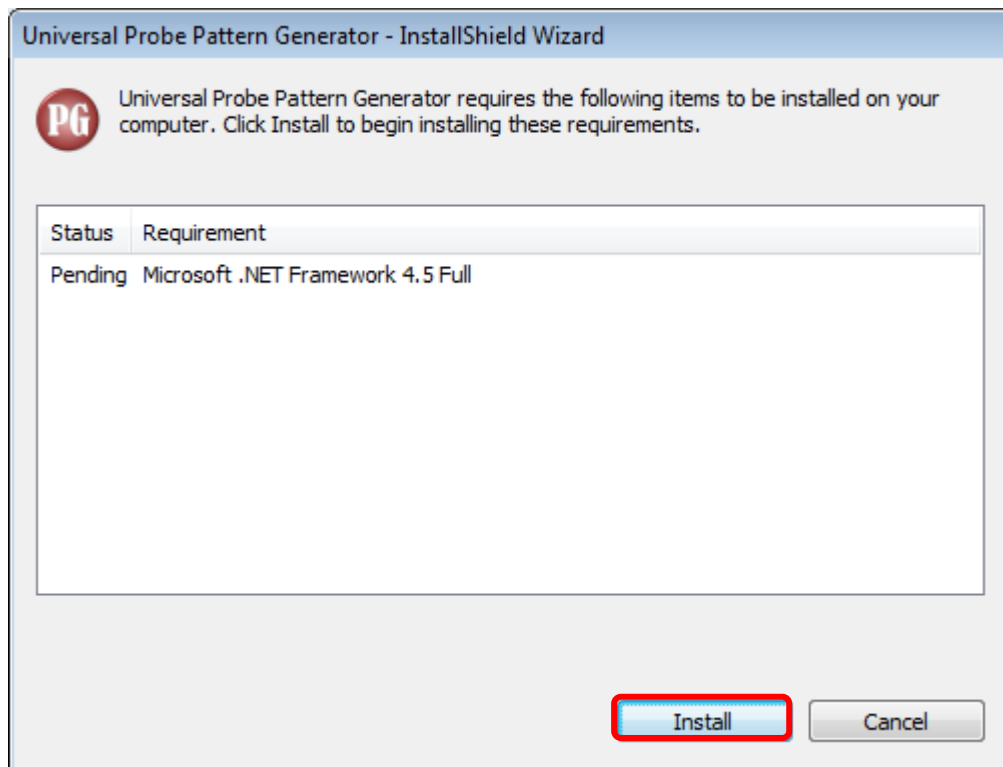


Figure 2

- 3) "Installing Microsoft .NET Framework 4.5" will begin.

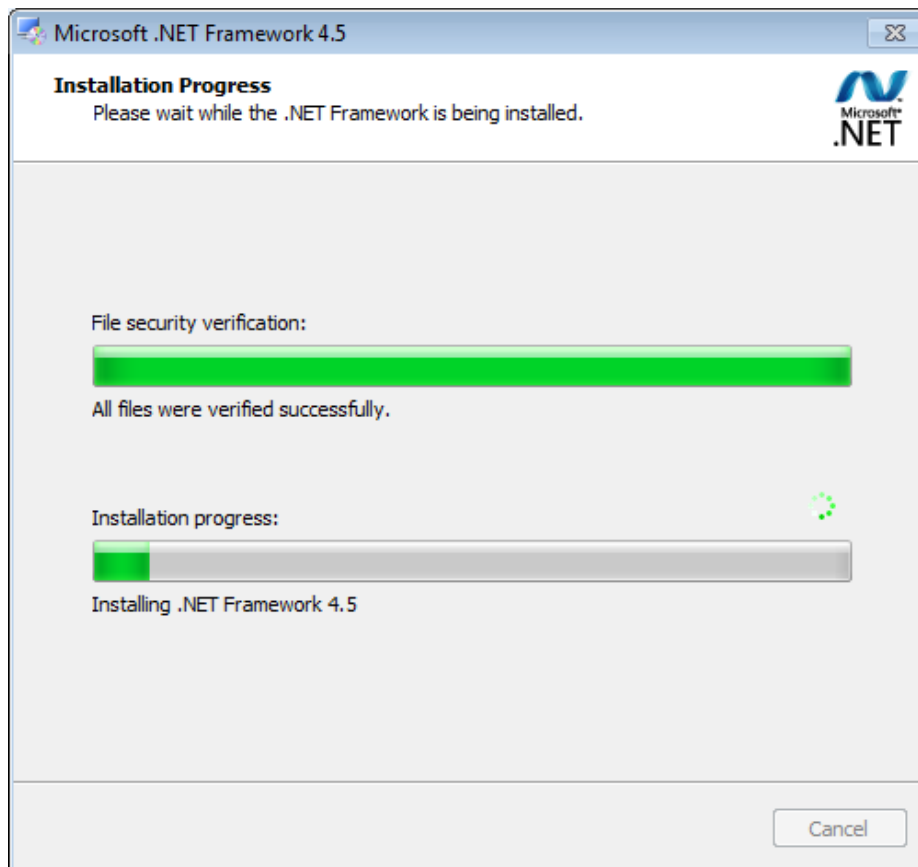


Figure 3

- 4) Setup dialog box, ready to open as shown in the figure below.

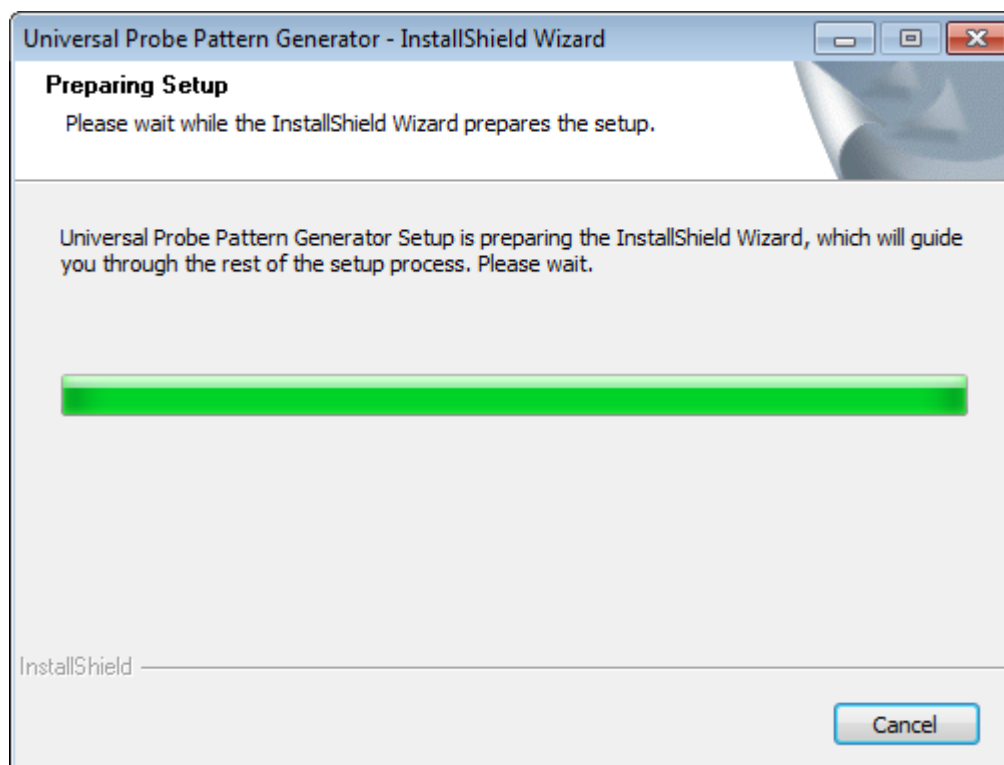
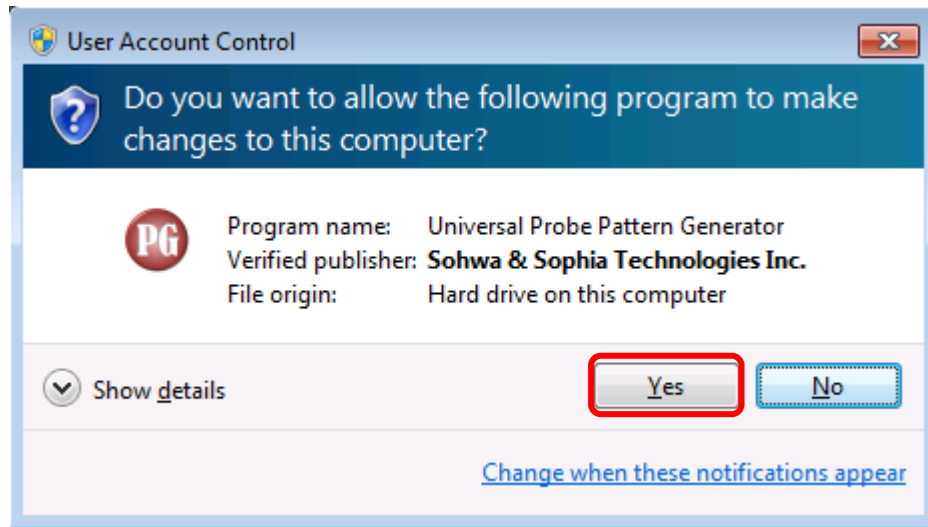


Figure 4

Open [Control user account] and [Security warning] dialog based on system security: click **[Yes]**, **[Continue]** or **[Allow]** for continuing installing.



- 5) InstallShield Wizard dialog as following will open.
Click **Next**.

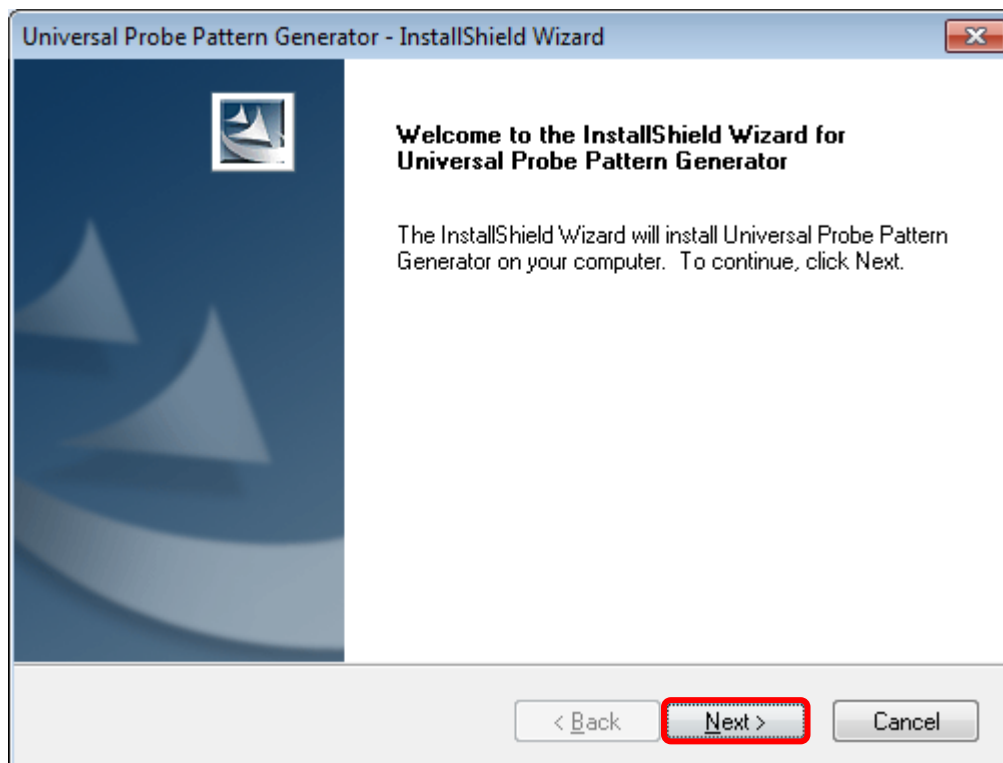


Figure 5

- 6) Agree with the End User License Agreement.
Read the End User License Agreement, then click **"I accept the terms in the license agreement"** if you are able to agree, and click **Next**.



Figure 6

- 7) Assign folder for install.
In the case of change, click **Browse...** assign install folder.
Please click **Next** If it is well.

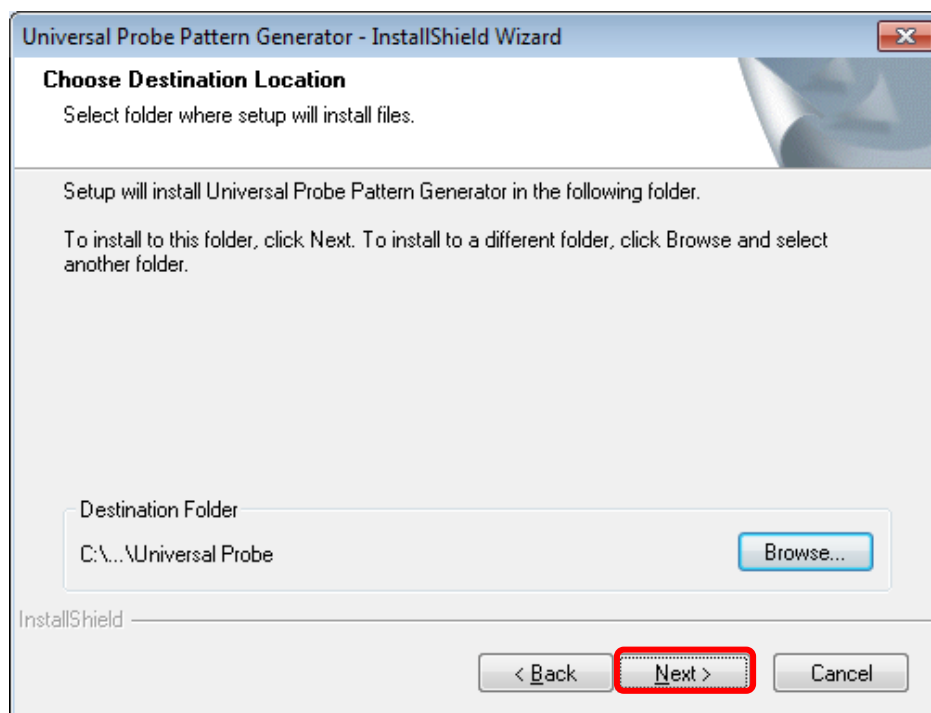


Figure 7

- 8) Please assign register folder for start menu.
Please click **Next** If it is well.

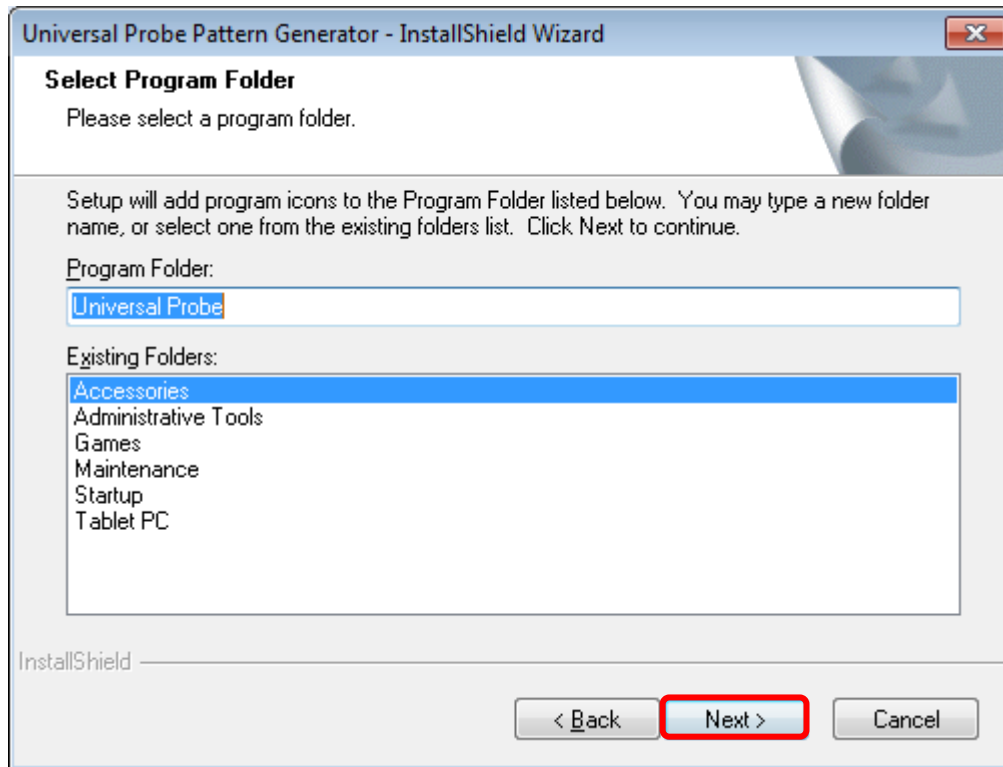


Figure 8

- 9) Execute installation as following.

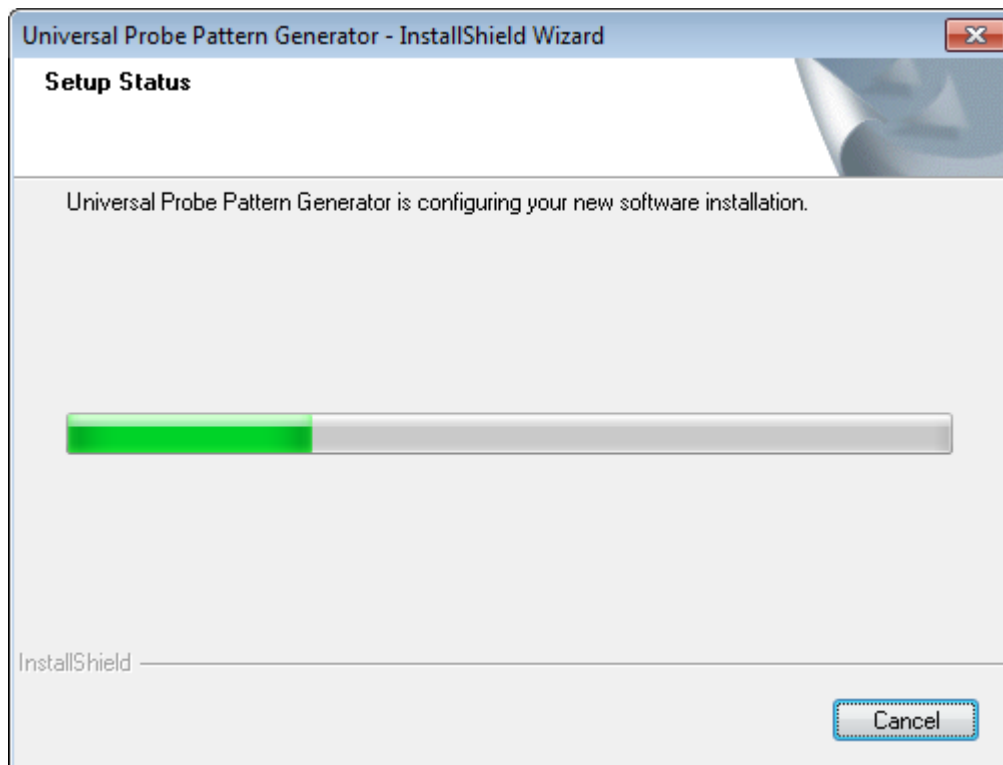


Figure 9

- 10) Please decide register Universal Probe icon to [Desktop].
Please click **Next** If it is well.

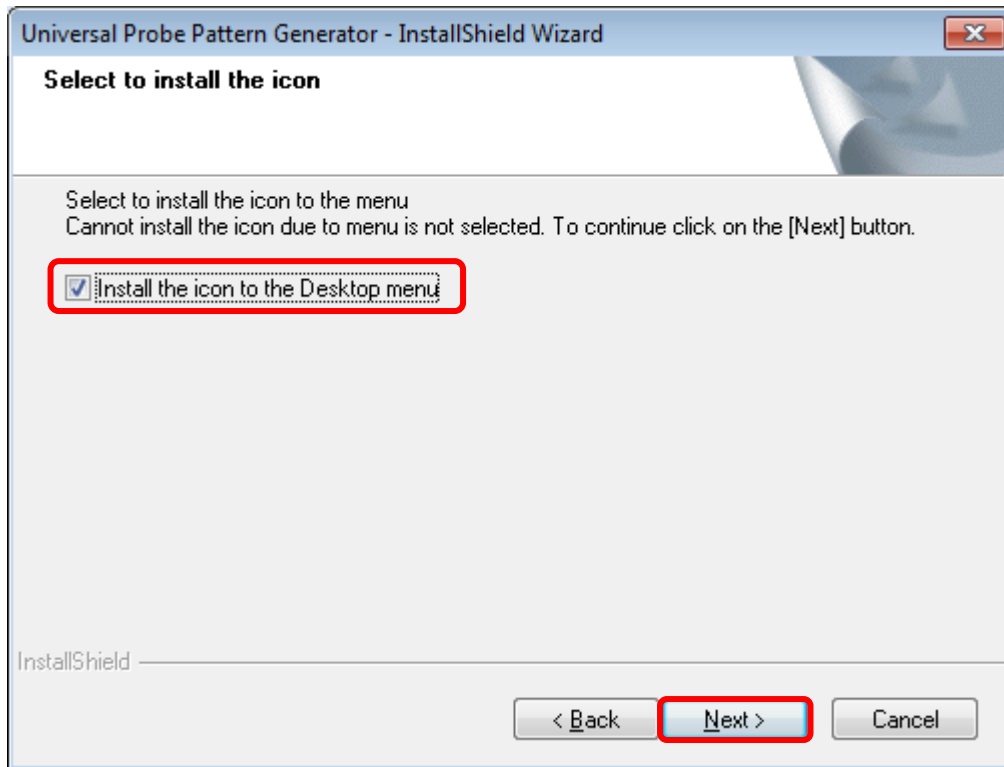


Figure 10

- 11) Complete install.
Reboot PC when finish install. Click **Finish**.

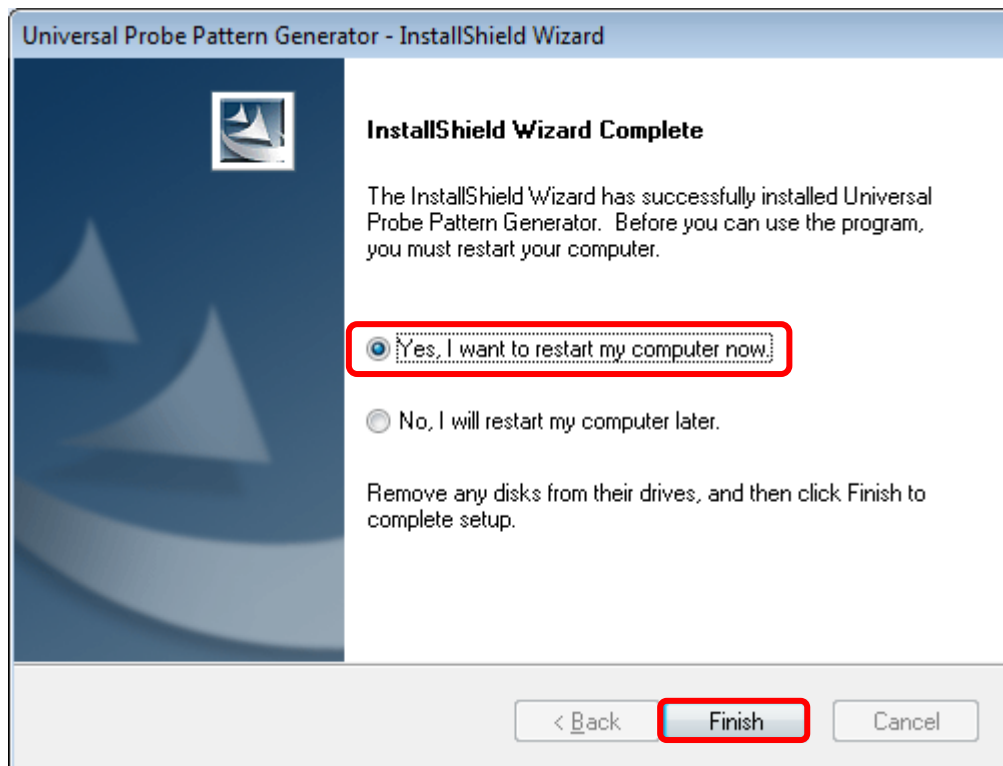


Figure 11

12) Universal Probe software will be added to start menu as following shows.

● Windows 7 :

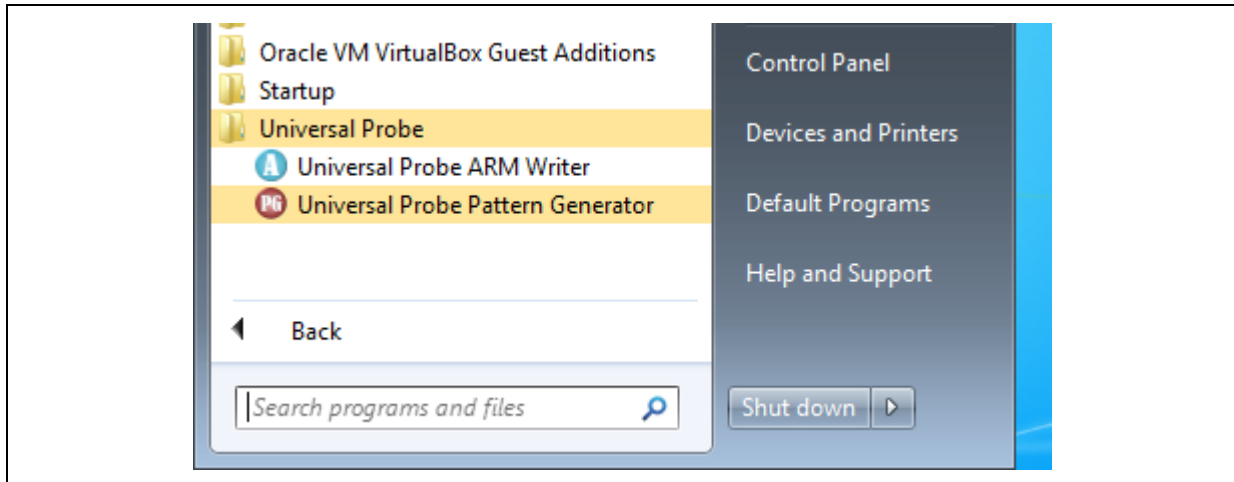


Figure 12

2. Install USB driver

Universal Probe use USB as interface for Universal Probe.

At the first time Universal Probe and USB cable connect PC, it means start installing USB HID driver automatically.



Please use it to connect directly with a USB cable Universal Probe and the host PC.

When the installation is complete, the following devices will be added to the Device Manager.

- HID-compliant device
- USB input device

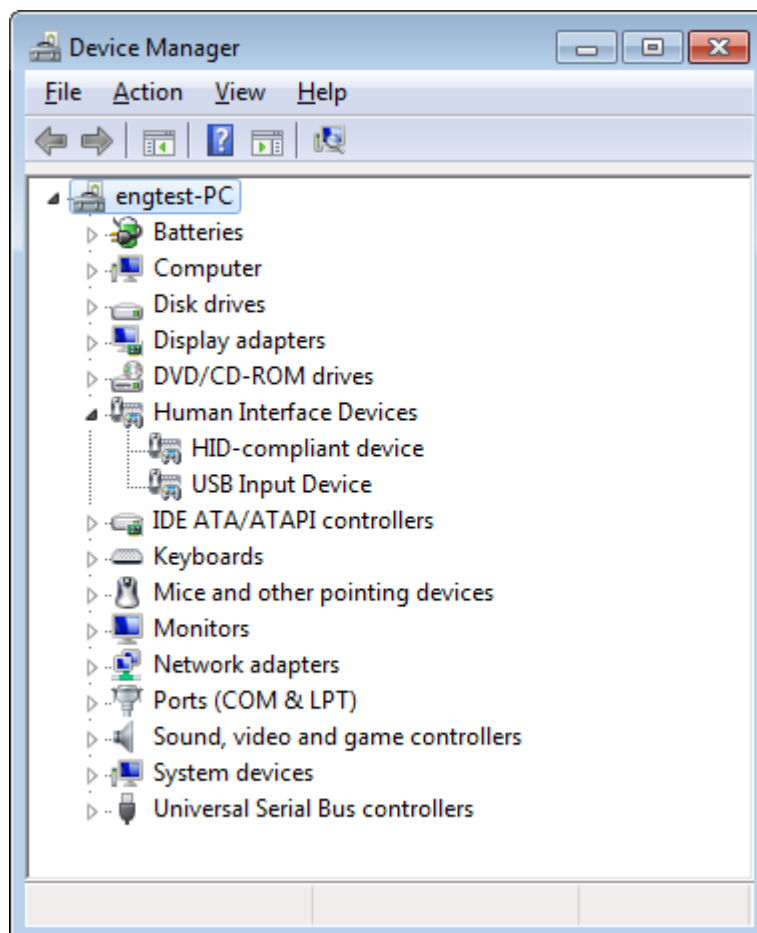


Figure 13

3. Uninstall Universal Probe

Here is 2 way of uninstall Universal software.

- (1) Re-install Universal Probe software.
- (2) Use control panel → add or delete application.

3.1. Uninstall by re-install

If the Universal Probe software already in PC, Installer of Universal Probe software installer will execute uninstall. Please follow the following procedure.

- 1) Double-click the installer software.
Setup ready dialog box, to open as shown in the figure below.

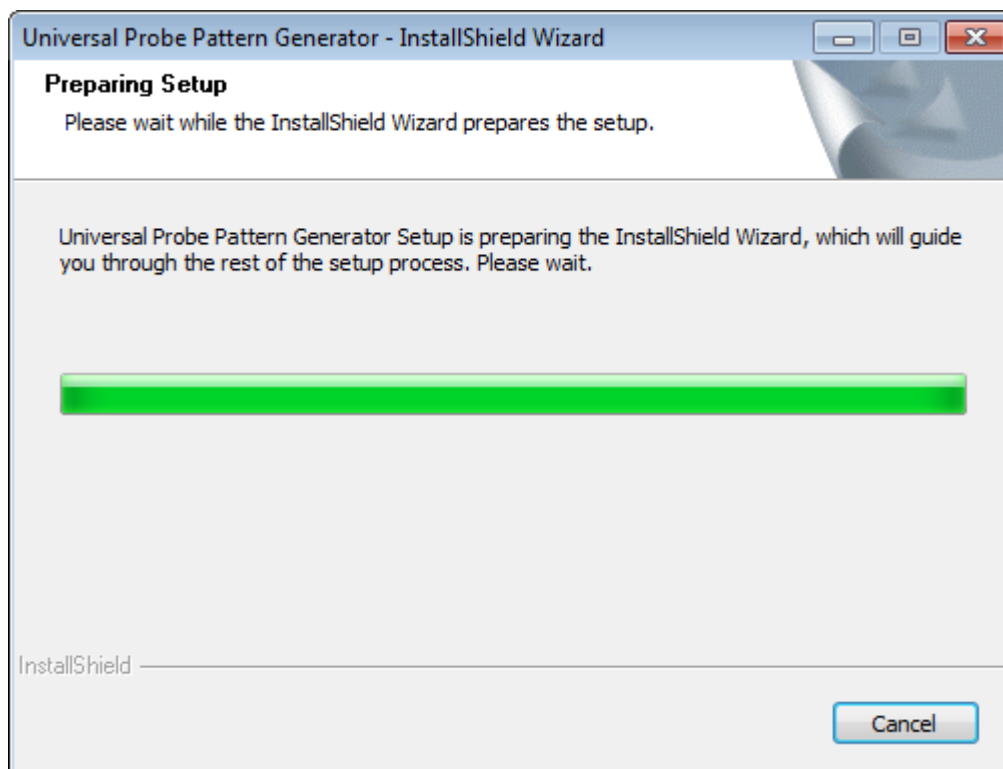


Figure 14

- 2) It will be inquiry for delete installed application or not. It has no relate of version.
Click **OK** button.

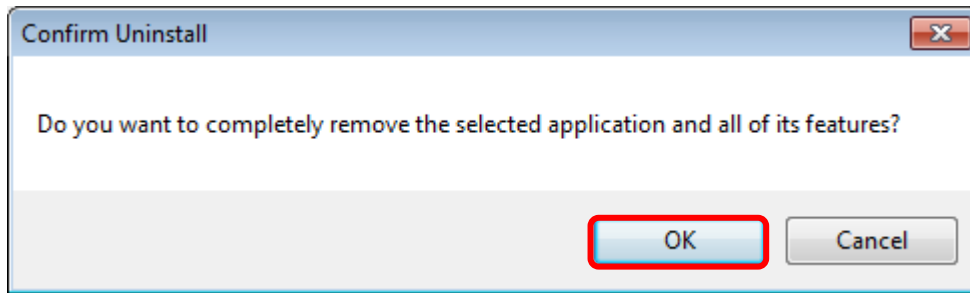


Figure 15

- 3) Uninstall will be finished.
Click **Finish** button.

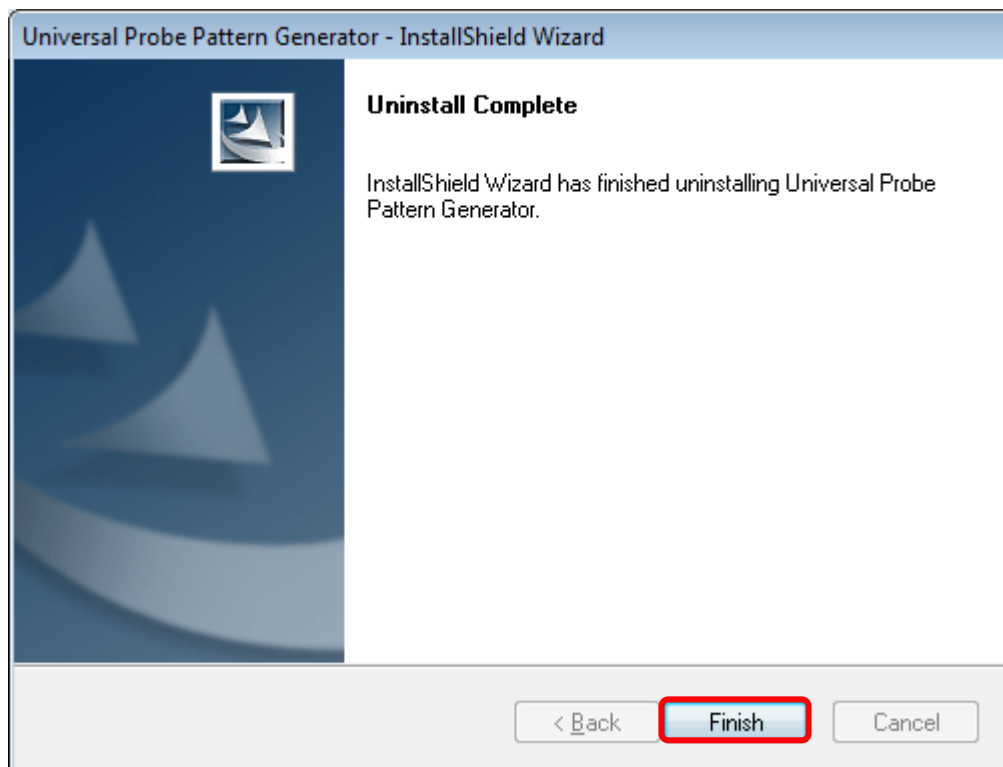


Figure 16

3.2. Uninstall by add or delete application

1) Open Control Panel.

● Windows 8 :

[All apps] → [Control Panel]

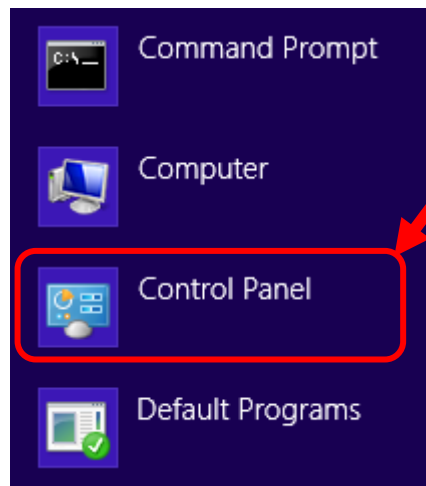


Figure 17

Or

[Desktop] [File Explorer] [Computer] → [Open Control Panel]

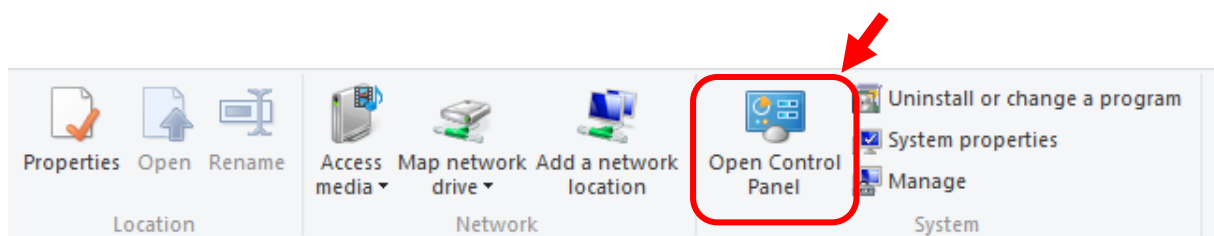


Figure 18

● Windows 7 :

[Start] → [Control Panel]

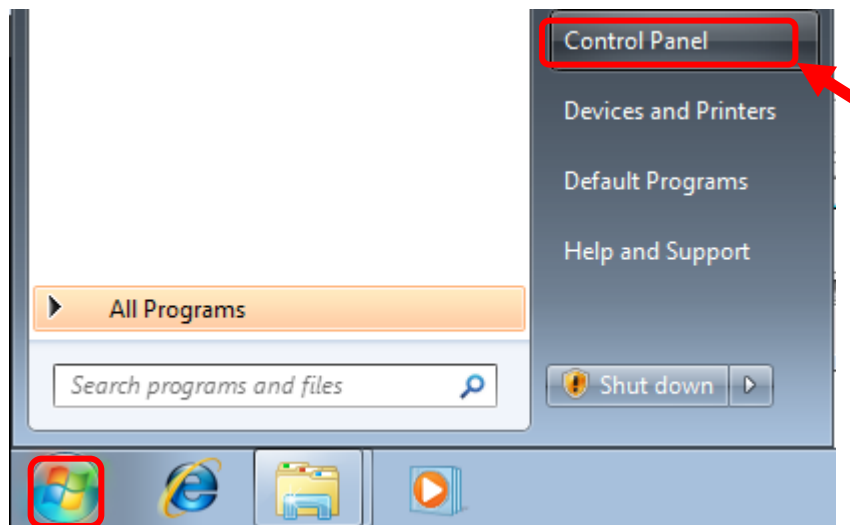


Figure 19

- 2) Open the control panel.
Click [Uninstall a program].

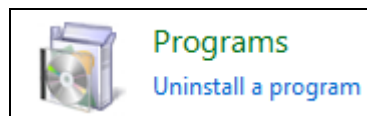


Figure 20

- 3) Diagram of [Uninstall or change a program] will open
Double-click the software you want to uninstall. Follow procedure on displayed on screen.

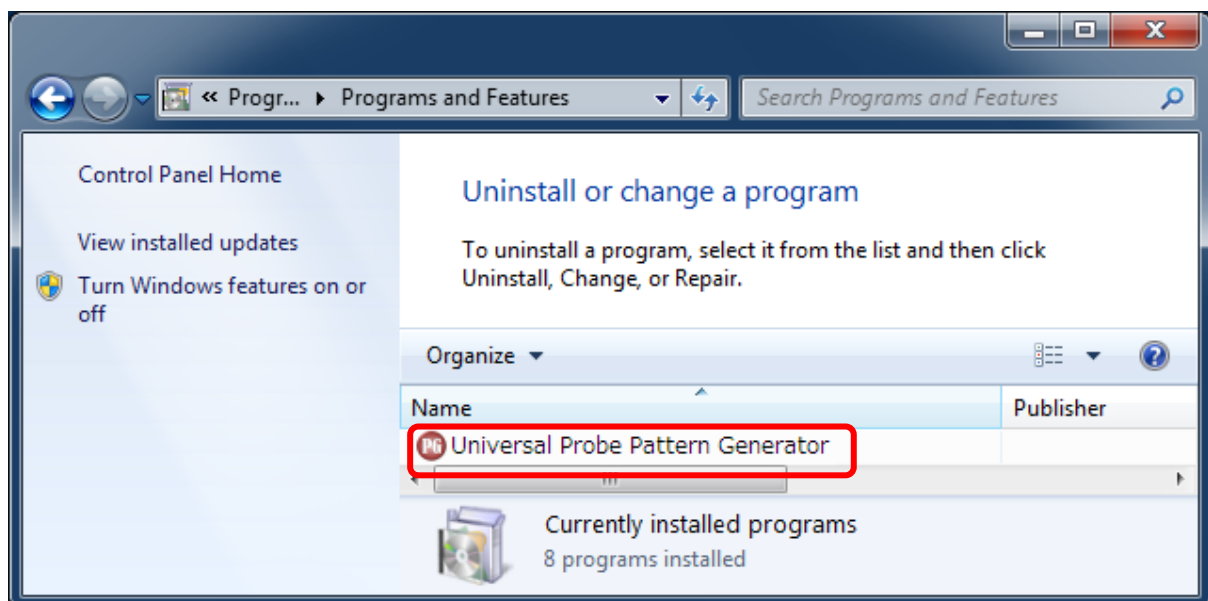


Figure 21

- 4) Dialog "Confirm File Deletion" opens.
Click **OK** button.

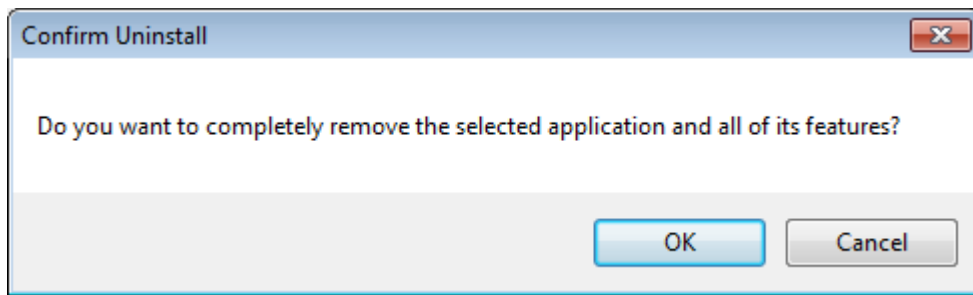


Figure 22

- 5) Uninstalling.

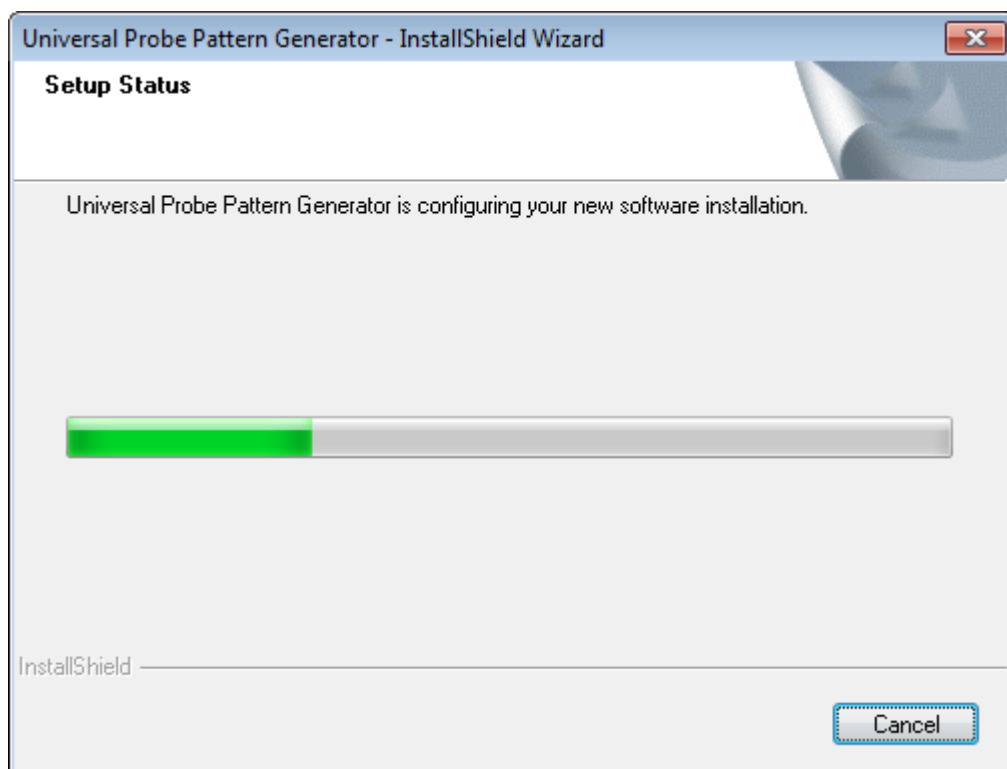


Figure 23

- 6) Uninstall of Universal Probe software finish.
Click **Finish** button.

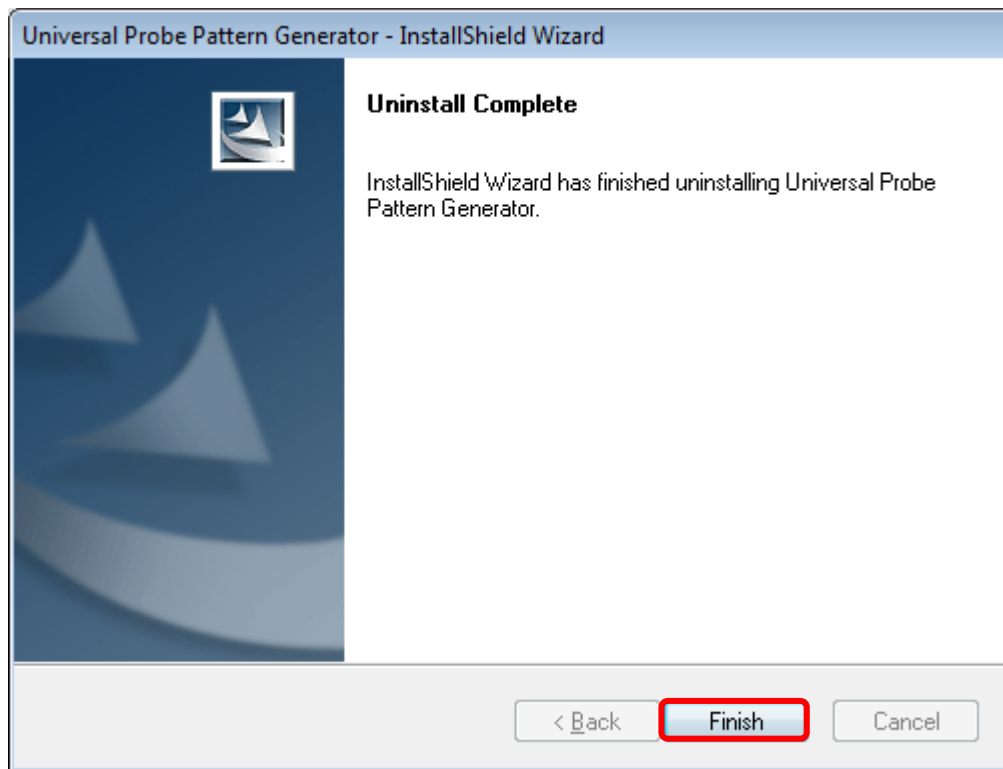


Figure 24



If it can not uninstall successful, other application becomes unstable where it influence.

Revision History

Ver. No.	Revision Date	Content of revision
01	09/19/2014	Initial release.
02	11/17/2014	Correction of typographical errors.

Manufacturer Information



Sohwa & Sophia Technologies Inc.

[Headquarters]

Postal code: 215-8588

6-2, Minami-kurokawa, Asao-ku, Kawasaki City, Kanagawa Pref.,
215-8588, JAPAN

Web: <http://www.ss-technologies.co.jp/en/index.html>

Subsidiary



SOHWA MALAYSIA SND. BHD.

Unit 5-2, Level 5, Tower 6, Avenue 5,
The Horizon, Bangsar South No.8, Jalan Kerinchi
59200, Kuala Lumpur, Malaysia

HomePage : <http://www.sohwa-m.com.my/>