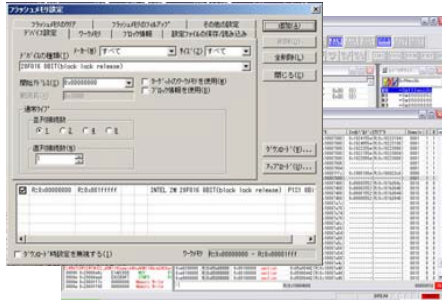


WATCHPOINT Debugger for EJ-SCT PXA



This software is used in combination with our JTAG emulator "EJSCT".




- Small size (70mm × 108mm × 17mm)
- Powered by USB bus when using in connection with PC

Features

- Supports Marvell®s PXA3xx application processor series *1
- Supports Marvell®s PXA27x application processor series
- Supports Marvell®s PXA25x/26x application processor series
- Supports 20-pin JTAG interface
- Supports wireless MMX®
- Branch trace capability *2
- View and modify coprocessors
- View and modify the internal peripheral registers
- Supports C/C++ (OS: Windows Vista/7)
- USB2.0 host interfaces for high-speed communication with host computer
- One common hardware unit supports other CPU series by purchasing software license additionally
- Download capability to flash memory
- Writes to on-board and CPU internal flash memory
- Useable as a stand-alone writer. (operate by AC adaptor)
- One-touch automatic script execution via the PLAY button on the unit
- The external terminal setup for executing a script by signal input and detecting the end state of a script externally *3
- Perfect for use in auto-verification of the target on mass production or for updating new versions

Specifications

Target CPU 	Marvell®s PXA3xx application processor series *1 PXA27x processor family PXA255/ 250/ 210/ 260/ 261/ 262/ 263 application processor
Memory and I/O	Entire space is available to user <u>Note:</u> In PXA26x/25x, monitor program will occupy 4KB memory space.
Interrupts	Both internal and external interrupts are available to user
Breakpoints and Break Options	Execution address break options: <ul style="list-style-type: none"> • Max 4 hardware breakpoints 2 on instruction execution address and 2 on memory access <u>Note:</u> When Step Over, Step Out, Come to function is in use, release 1 hardware breakpoint. <ul style="list-style-type: none"> • Unlimited software breakpoints Other break options: <ul style="list-style-type: none"> • Forced break from Debug Monitor
Branch Trace*2	To display the record of instruction execution is possible. <ul style="list-style-type: none"> • Record of execution from the breakpoint • Record of execution until break
Flash Memory	Download to target external Flash memory <ul style="list-style-type: none"> • Possible to write to not-supported flash memory when users make a custom program • Stand-alone writer capability Without a command from the computer, users can download to flash memory by recording flash memory writing script into the attached MicroSD. (Two different operation scripts can be recorded)

*1 PXA3xx Series supports the processor that is released November 1, 2008. Please contact us for the latest processor support.

*2 Only support PXA3xx series.

*3 PXA26x/25x series is not support.

Configuration



CD-ROM

※ This product was developed as
PXA Series debugger.
It can not be used for software
development of the other CPU.



JTAG CABLE types:
SCP7500 (SCP20tot20)

Supported Tool Chains:

WATCHPOINT supports the following compilers and OS:
Please contact Sohwa & Sophia Technologies for the latest
tool chain info.

Compiler:

- Intel C++ Software Development Tool Suite
- ARM ARM ADS, Real View

Supported OS:

- Windows CE(5.0/6.0) *
- Linux *
- ThreadX-μITRON (Only support PXA25x/ 26x Series)

* Requires optional software

Target ICE Connections

20-pin JTAG Interface Connector Pin Assignment (Top View)

Vtref : 1	2 : Vsupply
nTRST : 3	4 : GND
TDI : 5	6 : GND
TMS : 7	8 : GND
TCK : 9	10 : GND
N.C : 11	12 : GND
TDO : 13	14 : GND
nRESET : 15	16 : GND
N.C : 17	18 : GND
N.C : 19	20 : GND

Recommended connector: 7620-6002 (3M)

Regarding connection of each signal,
contact Sohwa & Sophia Technologies.

<PXA26x/25x>
Vtref : Connection to the target 3.3V
Vsupply : Connection to the target 3.3V

WATCHPOINT Software License

The WATCHPOINT for EJST is a licensed software product. One common hardware unit supports other CPU series by acquiring and registering additional software licenses.

* The WATCHPOINT license operates with the registered EJST hardware unit only. Once the license is registered with one EJST unit, users need to purchase a new WATCHPOINT license in order to use with another EJST unit.

Ordering Information

CUSTOMER should PERPARE		Necessary items for Debugger System			
HOST PC	CONNECT WITH PC	JTAG EMULATOR (Hardware)	WATCHPOINT Debugger (software)	JTAG Cable	SUPPORT SERVICE (Software updates)
WindowsPC	USB2.0/1.1 CONNECTION	SCD001: EJ-SCT	SCM9100E: WP DBG for EJS PXA E	SCP7500: SCP20tot20	SSS010 : Sophia Support Service

Items in the box surrounded by bold lines are necessary for Systems.
The EJST JTAG emulator serves as the hardware key when using software license

System requirements for WATCHPOINT:

- OS : Windows Vista/7 (32 bit, 64 bit)
- Memory : Minimum memory requirements are amount of memory recommended for each operating system by the operating systems vendor.
- Hard Disk :50MB for installation

* Product and company names are trademarks or registered trademarks of their respective owners.
* Product specifications are subject to change without notice.



Sohwa & Sophia Technologies Inc.

URL : <http://www.ss-technologies.co.jp/en/index.html>
E-mail: market@ss-technologies.co.jp

(Ver.140714)

Please contact us about the prices