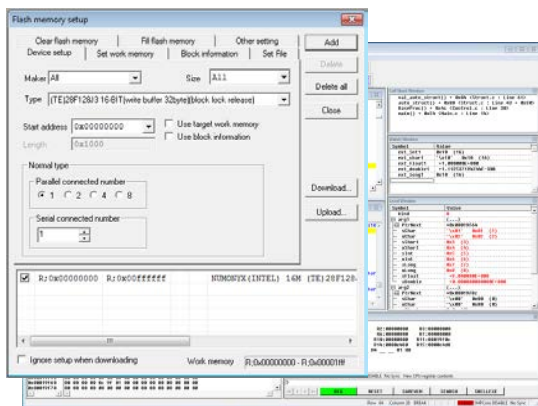


WATCHPOINT Debugger for EJ-SCT MeP



- Supports Toshiba MeP(Media embedded Processor)
- 2 hardware breakpoints(1 for address, 1 for data)
- Set hardware breakpoints on address & status
- Unlimited software breakpoints
- Download to Flash Memory capability
- Supports the multiple MeP modules
- Supports the optional instruction
- Supports the VLIW mode and the core mode
- Clear, read and program FLASH
- Perfect for field debugging or maintenance.
 - USB bus powered
 - No AC adapter required.
 - Pocket sized, 70x108x17mm
- Auto-script execution by BATCH button on the hardware unit
 - perfect use in auto-verification of the target on mass production or for updating new versions
- JTAG pod button runs User macro scripts
 - Perfect for hardware test, small run programming and automatic field upgrades.
- Fast USB2.0 PC interface
- Supports C/C++ (OS: Windows Vista/7)

Specifications

Target CPU	MeP(Media embedded Processor) core
Target Vcc	Vcc=+1.2 V to 3.6 V
Memory & I/O	Entire space is available to the User.
Interrupts	Both internal and external interrupts are available to the User.
Breakpoints & Break Options	<p>Breakpoints can be set as follows,</p> <ul style="list-style-type: none"> • 2 hardware breakpoints (*1, *2) <ul style="list-style-type: none"> Execution instruction address: 1 point Data access : 1 point For C5 core: <ul style="list-style-type: none"> Execution instruction address: Max 4 point Data access : Max 4point • Unlimited software breakpoints • Other break options: Forced break from Debug Monitor <p>*1: In the area where Software breakpoints are not available, when Step Over, Step Out, or Come to function is in use, release 1 hardware breakpoint.</p> <p>*2: The number of hardware breakpoints may change depending on the CPU core design.</p>
Flash Memory	Download a user program directly to flash memory on target board by debugger
Others	(Resetout-) terminal can be set at Low level by the Reset command from the debugger. (PRUNOut) terminal to indicate program execution can be specified at Low or High level.

Configuration



CD-ROM



JTAG CABLE type:
SCP6000 : SCP MeP

Supported Tool Chains:

WATCHPOINT supports the following compilers and OS*:

Compiler:

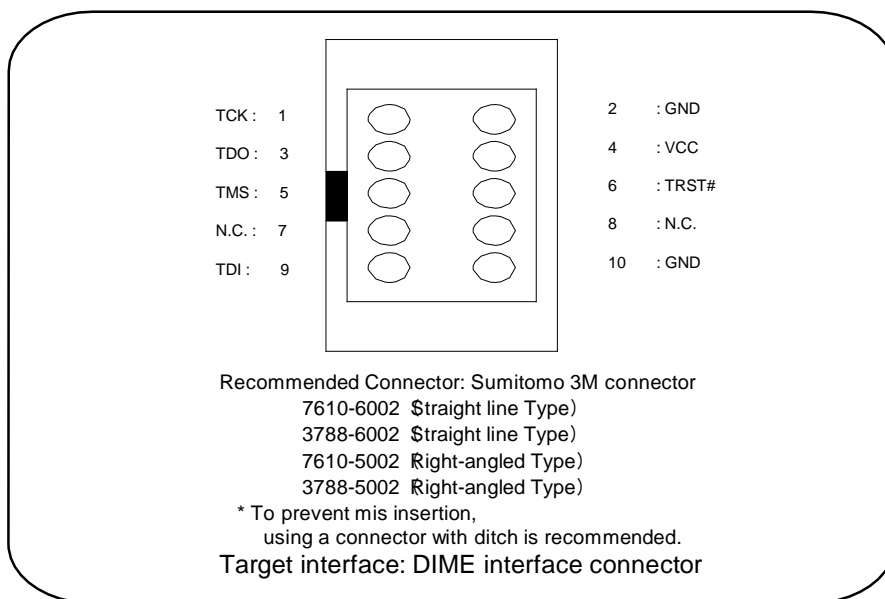
GNU : GCC

Supported OS:

iTRON

* Please contact Sohwa & Sophia Technologies for the latest tool chain information.

Target ICE Connections



DIME interface connector pin

Ordering Information

CUSTOMER should PREPARE		Necessary items for Debugger System		
HOST PC	CONNECT WITH PC	JTAG EMULATOR (Hardware)	WATCHPOINT Debugger (software)	SUPPORT SERVICE (Software updates)
Windows PC (IBM PC/AT & COMPATIBLE MACHINE)	USB2.0/1.1 CONNECTION	SCD001: EJ-SCT	SCM0600E: WP DBG for EJS MeP	SSS010: Sophia Support Service

System requirements for WATCHPOINT Debugger:

OS : Windows Vista/7*

Memory : Minimum memory requirements are amount of memory recommended for each operating system by the operating systems vendor.

Hard Disk : At least 100MByte of free hard disk space

Notes : * Supports Windows Vista/7 (64bit/32bit)

* Product and company names are trademarks or registered trademarks of their respective owners.

* Product specifications are subject to change without notice.

Sohwa & Sophia Technologies Inc.



URL: <http://www.ss-technologies.co.jp/en/index.html>

Email: market@ss-technologies.co.jp

(Ver.150310)